



# 河北达味起重机械制造有限公司

**Hebei Dawei Hoisting Machinery Manufacturing Co., Ltd.**

# CONTENTS

1 永磁起重器  
Permanent  
Magnetic Lifter

2 搬运小坦克  
Cargo  
trolley

3 门式起重机  
Adjustable  
gantry crane

4 千斤顶  
Industrial  
jack series

5 手动托盘车  
Hand pallet  
truck

6 单轨行车  
Geared  
trolley

7 防坠器  
Fall  
Arrestore

8 弹簧平衡器  
Spring  
balancer



# Permanent Magnetic Lifter

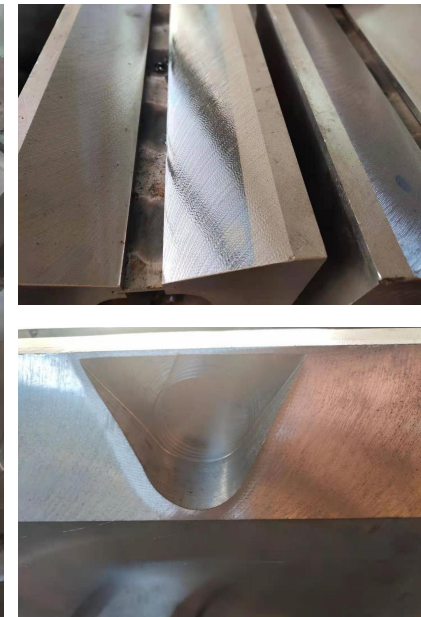
## Main uses and characteristics

YS series strength permanent magnet hoisting machine is mainly used for holding plate in the process of lifting or cylindrical workpiece of ferromagnetic material, with light structure, convenient operation, strong holding force, safe and reliable characteristics, help to improve the working conditions of loading and unloading handling, improve the labor productivity, so in factories, docks, warehouses and transportation industry, has been widely used as a lifting tool.



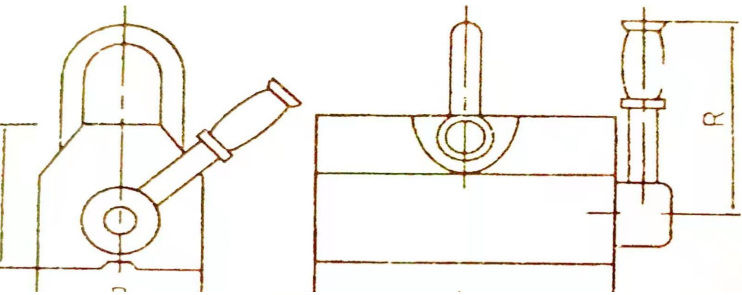
## Main structure and parameters

The powerful permanent magnet hoisting device adopts high-energy permanent magnetic material, which produces strong holding force in the magnetic circuit, and turns the pole core shaft by the handle to make the hoisting device in the working or closed state, without external power supply operation and operation. When in the working state, the lifting device at the bottom of the suction surface formed a pair of longitudinal magnetic poles, the workpiece of ferromagnetic materials firmly suction, suction surface is also made of V groove, so as to not only hold plate shaped workpiece, but also can hold cylindrical workpiece.



# >> Permanent Magnetic Lifter

Product parameter table



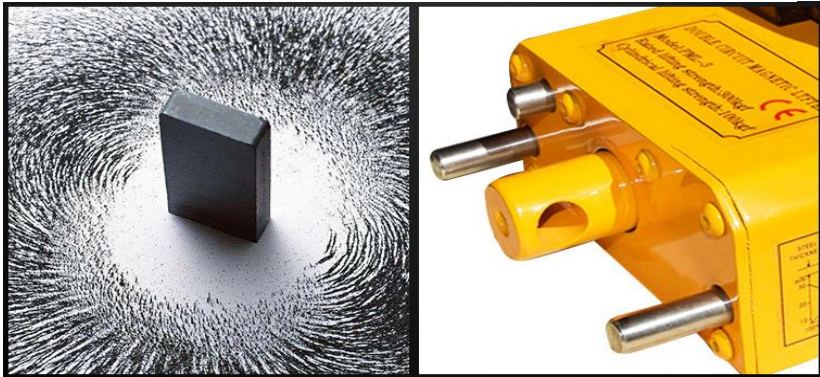
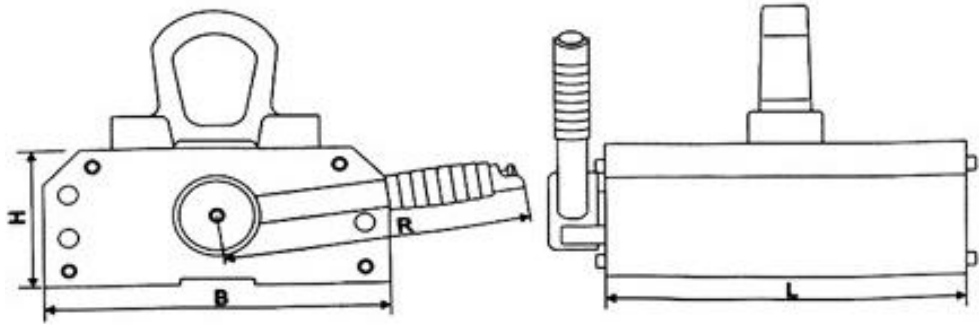
| Model   | Rated lifting capacity | Max pull off force | Size (mm) |     |     |     | N.W.(kg) |
|---------|------------------------|--------------------|-----------|-----|-----|-----|----------|
|         |                        |                    | L         | B   | H   | R   |          |
| YS-100  | 100kgf                 | 300kgf             | 91        | 62  | 68  | 160 | 2.7      |
| YS-200  | 200kgf                 | 600kgf             | 135       | 62  | 68  | 205 | 3.8      |
| YS-400  | 400kgf                 | 1200kgf            | 162       | 88  | 92  | 205 | 9.3      |
| YS-600  | 600kgf                 | 1800kgf            | 215       | 103 | 116 | 240 | 18.4     |
| YS-1000 | 1000kgf                | 3000kgf            | 263       | 142 | 136 | 275 | 34.2     |
| YS-2000 | 2000kgf                | 5000kgf            | 352       | 166 | 165 | 370 | 65.2     |
| YS-3000 | 3000kgf                | 7500kgf            | 400       | 166 | 166 | 370 | 83.5     |
| YS-5000 | 5000kgf                | 12500kgf           | 527       | 225 | 220 | 590 | 188      |



# Permanent Magnetic Lifter



Double  
magnetic circuit



| Model  | Rated load | Round steel load | Size (mm) |     |     |     | Self weight | Operating temperature |
|--------|------------|------------------|-----------|-----|-----|-----|-------------|-----------------------|
|        |            |                  | L         | B   | H   | R   | (Kg)        | (°C)                  |
| PML-3  | 300kgf     | 100kgf           | 163       | 133 | 60  | 203 | 9.5         | <80                   |
| PML-6  | 600kgf     | 200kgf           | 234       | 162 | 74  | 267 | 21          | <80                   |
| PML-10 | 1000kgf    | 300kgf           | 302       | 190 | 87  | 306 | 37.5        | <81                   |
| PML-20 | 2000kgf    | 600kgf           | 441       | 231 | 107 | 500 | 77          | <82                   |

# >> Permanent Magnetic Lifter

Product parameter



|     | Steel plate thickness |        | Rate of the hoisting Capacity |         |         |         |        |        |        |
|-----|-----------------------|--------|-------------------------------|---------|---------|---------|--------|--------|--------|
|     | mm                    | inch   | YS-5000                       | YS-3000 | YS-2000 | YS-1000 | YS-600 | YS-400 | YS-100 |
| T1  | Up60                  | Up2.36 | 100%                          | 100%    | 100%    | 100%    | 100%   | 100%   | 100%   |
| T2  | 55                    | 2.16"  | 90%                           | 90%     |         |         |        |        |        |
| T3  | 50                    | 1.97"  | 85%                           | 85%     | 95%     |         |        |        |        |
| T4  | 45                    | 1.77"  | 80%                           | 80%     | 85%     |         |        |        |        |
| T5  | 40                    | 1.57"  | 75%                           | 75%     | 80%     |         |        |        |        |
| T6  | 35                    | 1.38"  | 65%                           | 65%     | 70%     | 85%     | 85%    | 70%    | 85%    |
| T7  | 30                    | 1.18"  | 55%                           | 55%     | 60%     | 75%     |        |        |        |
| T8  | 25                    | 0.98"  | 45%                           | 45%     | 50%     | 65%     |        |        |        |
| T9  | 20                    | 0.79"  | 35%                           | 35%     | 40%     | 55%     | 70%    | 85%    |        |
| T10 | 15                    | 0.59"  | 25%                           | 25%     | 30%     | 45%     | 55%    | 65%    |        |
| T11 | 10                    | 0.39"  | 15%                           | 15%     | 20%     | 30%     | 40%    | 45%    | 65%    |
| T12 | 5                     | 0.20"  | 10%                           | 10%     | 10%     | 15%     | 20%    | 25%    | 35%    |



## Cargo trolley



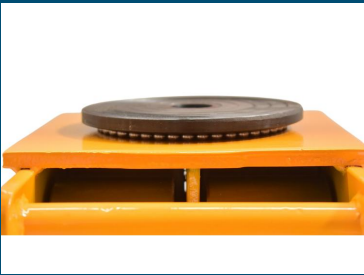
## Product advantages

When it is used with heavy jack or crowbar, it can save time when it is used far away from heavy equipment. It is convenient to use, time-saving and labor-saving. It is an ideal tool for carrying heavy equipment. It is suitable for carrying all kinds of small, medium, large and heavy equipment containers.

## Product features

1. Carrying small tank, small volume, heavy load.
2. Forged steel plate, strong bearing force. Common steel plate is made in China.
3. Wheel material: silicone resin, strong pressure resistance. It can also protect the ground and prevent oil pollution; the sliding wheel does not need maintenance, and the surface has a rubber layer to protect the material and increase the weight
4. Stability; large load capacity, can be equipped with control lever, mobile, easy to turn.
5. Easy to operate, as long as it is used with the jacking tool, it can greatly save the working cycle. No maintenance is needed. The product itself is simple and needs no maintenance.

| Product name               | Model | Number of wheels | Weight (rubber wheel) | Weight (Steel wheel) |
|----------------------------|-------|------------------|-----------------------|----------------------|
| Straight cargo trolley     | 6T    | 4                | 11.8KG                | 15.5KG               |
|                            | 8T    | 6                | 16.8KG                | 22.7KG               |
|                            | 12T   | 8                | 21.6KG                | 29.4KG               |
|                            | 15T   | 9                | 24.1KG                | 32.3KG               |
|                            | 18T   | 12               | 30.7KG                | 41.5KG               |
|                            | 24T   | 16               | 44.5KG                | 57.7KG               |
|                            | 32T   | 20               | 62.8KG                | 78.5KG               |
| 180°rotation cargo trolley | 6T    | 4                | 15.8KG                | 19.3KG               |
|                            | 8T    | 6                | 20.6KG                | 25.4KG               |
|                            | 12T   | 8                | 28.5KG                | 35.5KG               |
|                            | 15T   | 9                | 29.36KG               | 37.24KG              |
|                            | 18T   | 12               | 37KG                  | 43KG                 |
|                            | 24T   | 16               | 63.6KG                | 74KG                 |
|                            | 32T   | 19               | 74KG                  | 86.8KG               |





# Cargo trolley



## Product parameter table

| Product name               | Model | Number of wheels | Weight (rubber wheel) |
|----------------------------|-------|------------------|-----------------------|
| Combined cargo trolley     | 8T    | 16               | 75KG                  |
|                            | 12T   | 24               | 100KG                 |
|                            | 16T   | 32               | 125KG                 |
|                            | 18T   | 36               | 140KG                 |
|                            | 24T   | 48               | 160KG                 |
|                            | 32T   | 64               | 175KG                 |
| 360°rotation cargo trolley | 2T    | 3                | 20KG                  |
|                            | 3T    | 4                | 22KG                  |
|                            | 5T    | 5                | 38KG                  |
|                            | 6T    | 5                | 40KG                  |



## Adjustable Gantry crane



**The Adjustable Gantry Crane is made of heavy-duty, all steel construction. It's ideal for shops where lifting is an essential part of the business.**

**It goes where forklifts can't. Quick assembly and disassembly allow for easy transport within a job-site or from site to site. Auto-lock feature keeps unit secure. Super-strong casters with rubber roll smoothly.**

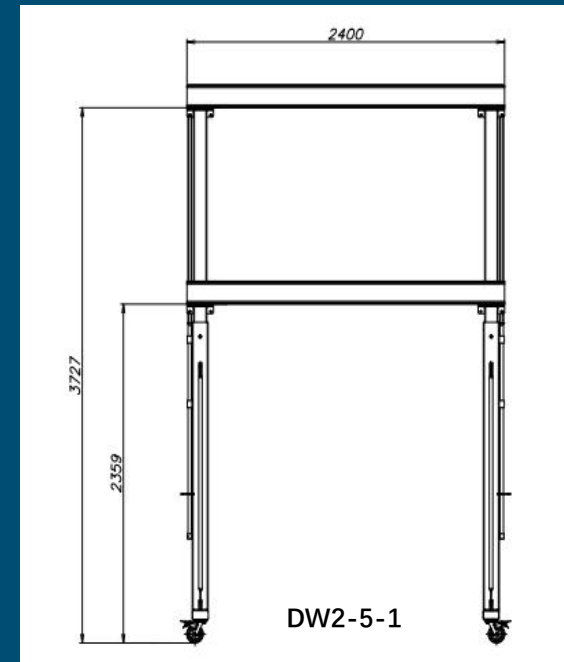
**Gantry crane is NOT to be moved while loaded.**



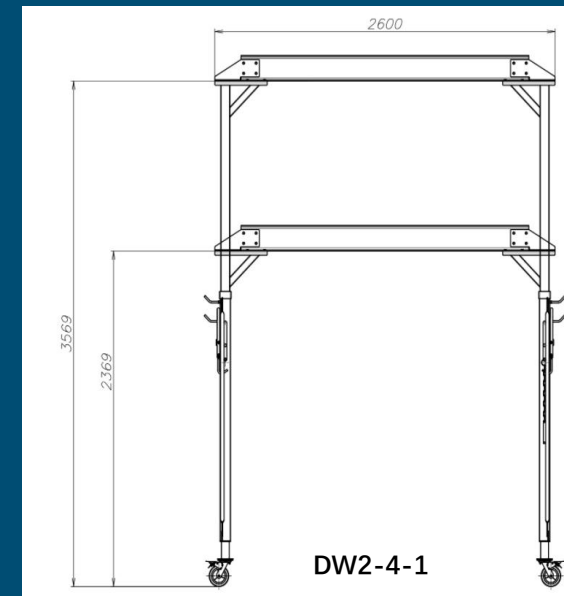
## Adjustable Gantry crane

| Model   | Load (KG) | L*W*H (MM)     | Lifting height (MM) | N.W (KG) | G.W (KG) |
|---------|-----------|----------------|---------------------|----------|----------|
| DW2-4-1 | 1000      | 2605*1210*2440 | 2293-3493           | 140      | 165      |
| DW2-4-2 | 2000      | 2600*1204*2549 | 2369-3569           | 166      | 191      |
| DW2-5-1 | 1000      | 2400*1204*2510 | 2359-3727           | 200      | 238      |

- All-steel construction
- Quick assembly and disassembly for easy transport
- 12 positive stops provide sturdy support



## Product parameter table





## Industrial tool jack



Industrial tool jack is a light and small lifting equipment that uses rigid jacking parts as the working device and jacks heavy objects in a small stroke through the top bracket or bottom bracket. This jack can not be used when the general jack can not match the height of the top weight. The rocker can rotate  $270^{\circ}$ . When reaching the height limit, the oil will be returned automatically.

>>

Industrial jack Series

Product parameter table



DW-50



| Product name         | Modle | Capacity | Head capacity | Min.toe Height | Max.toe Height | Min.head Height | Max.head Height | Packing size (cm) | Net weight |
|----------------------|-------|----------|---------------|----------------|----------------|-----------------|-----------------|-------------------|------------|
| Industrial tool jack | DW-5  | 5        | 2.5           | 16             | 130            | 235             | 362             | 21.5*16*26        | 10         |
|                      | DW-10 | 10       | 5             | 25             | 148            | 295             | 418             | 30.5*22*32        | 24         |
|                      | DW-20 | 20       | 10            | 32             | 173            | 330             | 471             | 32.5*27.5*35.5    | 38         |
|                      | DW-30 | 30       | 15            | 32             | 200            | 345             | 520             | 33*28*36          | 48         |
|                      | DW-50 | 50       | 25            | 40             | 160            | 390             | 520             | 39.5*30*42        | 80         |



# Industrial jack Series



## Product Parameter Table

### Hand pallet truck/jack



| Rated Load | Max.Fork Height | Min.Fork Height | Fork Length | Fork Overall Width | Single Fork Width | Front-wheel size(Materials) | Rear-wheel size(Materials) | Net weight |
|------------|-----------------|-----------------|-------------|--------------------|-------------------|-----------------------------|----------------------------|------------|
| KG         | MM              | MM              | MM          | MM                 | MM                | MM                          | MM                         | KG         |
| 2000       | 205             | 85              | 1200        | 550                | 160               | 80*60<br>Polyurethane       | 200*50<br>Polyurethane     | 68         |
| 2000       | 205             | 85              | 1200        | 685                | 160               |                             |                            | 73         |
| 3000       | 205             | 85              | 1200        | 550                | 160               | 80*70<br>Polyurethane       | 180*50<br>Polyurethane     | 71         |
| 3000       | 205             | 85              | 1200        | 685                | 160               |                             |                            | 77         |
| 2000       | 205             | 85              | 1200        | 550                | 160               | 80*60<br>Nylon              | 200*50<br>Nylon            | 65         |
| 2000       | 205             | 85              | 1200        | 685                | 160               |                             |                            | 70         |
| 3000       | 205             | 85              | 1200        | 550                | 160               | 80*70<br>Nylon              | 200*50<br>Nylon            | 68         |
| 3000       | 205             | 85              | 1200        | 685                | 160               |                             |                            | 74         |

# >> Geared trolley

FD-X Plain trolley parameter

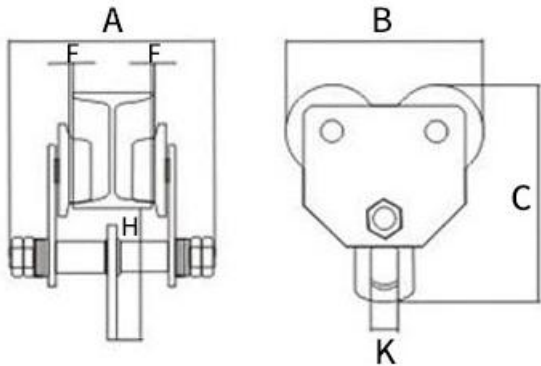
|              |        |        |        |         |         |
|--------------|--------|--------|--------|---------|---------|
| Rated load   | 0.5t   | 1t     | 2t     | 3t      | 5t      |
| Test load    | 0.825t | 1.25t  | 2.25t  | 3.25t   | 5.25t   |
| Net weight   | 4.2kg  | 6.05kg | 9.5kg  | 14.55kg | 27kg    |
| Gross weight | 4.5kg  | 6.35kg | 9.85kg | 15.05kg | 27.55kg |



## Product introduction

This product can form a manual lifting transport car by hanging the chain block or other lifting machinery under the car. It is installed on the monorail overhead transport line of straight or curved road or on the manual single beam, bridge and cantilever cranes.

It is widely used in factories, mines, docks, docks, warehouses and machine rooms to install machines and lift goods, It is especially suitable for equipment maintenance work in places without power supply.





## Geared trolley



### GCL Geared trolley Performance data

| Model                       | GCL0.5   | GCL1     | GCL2     | GCL3     | GCL5     | GCL10    | GCL20    |
|-----------------------------|----------|----------|----------|----------|----------|----------|----------|
| Rated load                  | 0.5 t    | 1 t      | 2 t      | 3 t      | 5 t      | 10 t     | 10 t     |
| Test load                   | 0.825 t  | 1.25 t   | 2.25 t   | 3.25 t   | 5.25 t   | 10.825 t | 20.825 t |
| Standard lifting height     | 2.5 m    | 2.5 m    | 3 m      | 3 m      | 3 m      | 3 m      | 3 m      |
| Chainpull to lift full load | 60 n     | 80 n     | 140 n    | 150 n    | 170 n    | 320 n    | 2*320 n  |
| Gross weight                | 10 kg    | 15 kg    | 17 kg    | 25 kg    | 48 kg    | 106 kg   | 250 kg   |
| Packing size(cm)            | 26*21*25 | 28*25*17 | 32*28*19 | 34*33*22 | 38*37*27 | 51*49*44 | 90*58*63 |



## Geared trolley



### GCT Plain trolley parameter

| Rated load       | GCT0.5  | GCT1    | GCT2      | GCT3     | GCT5       | GCT10    |
|------------------|---------|---------|-----------|----------|------------|----------|
| Test load        | 0.825 t | 1.25 t  | 2.25 t    | 3.25 t   | 5.25 t     | 10.825 t |
| Net weight       | 5.3 kg  | 8.7 kg  | 10.4 kg   | 24 kg    | 36 kg      | 83 kg    |
| Gross weight     | 5.8 kg  | 9.5 kg  | 11.4kg    | 25 kg    | 46 kg      | 108 kg   |
| Packing size(cm) | 22*17*6 | 26*20*7 | 30.5*23*8 | 34*27*10 | 37.5*27*11 | 48*42*20 |

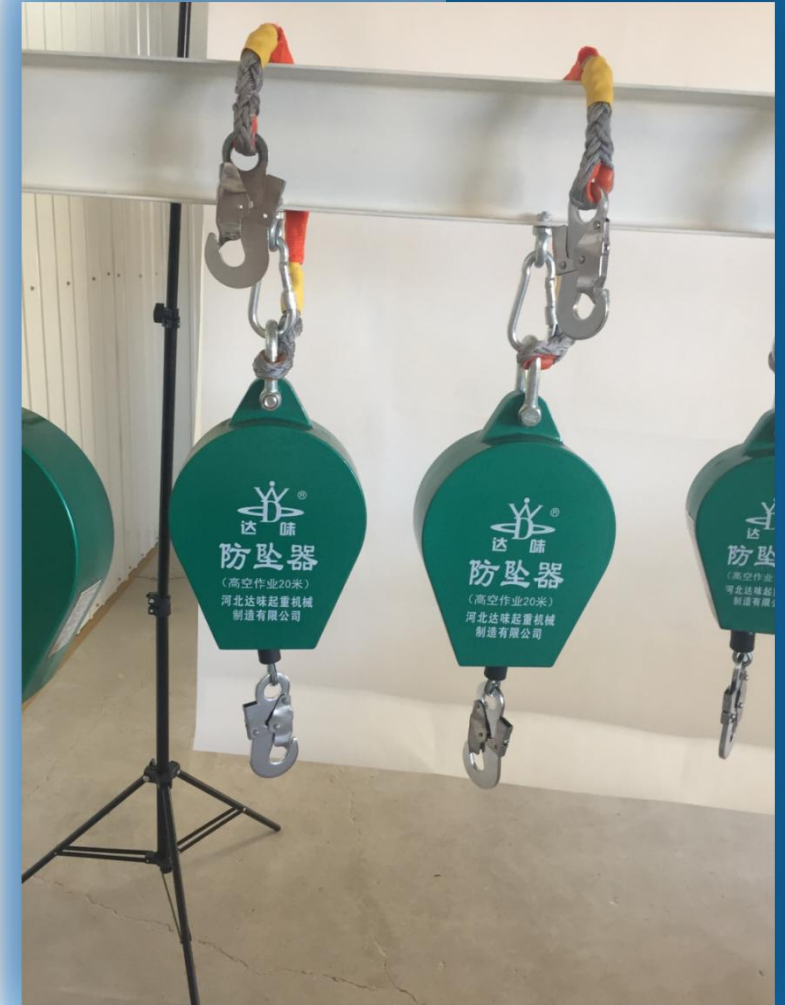


# Anti falling device

## Product introduction

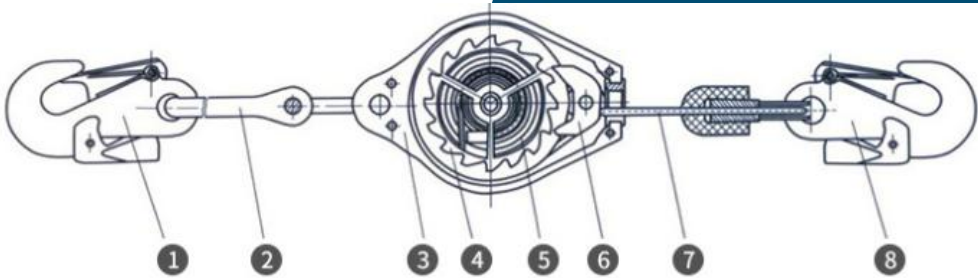
Anti falling device is a kind of protective product. It can quickly brake and lock the falling objects within a limited distance. It is suitable for the safety protection when the crane is lifting to prevent the accidental falling of the lifted workpiece. It can effectively protect the life safety of ground operators and the damage of the lifted workpiece. It is used in metallurgy, automobile manufacturing, petrochemical industry, engineering construction, electric power, ship, communication, pharmacy, bridge and other high-altitude workplaces.

The anti falling device uses the falling speed difference of objects for automatic control, hanging high and using low. TXS2 series can be used only by crossing the nylon rope over the structure with strong blunt edge, hanging the hook on the nylon rope into the "n" ring, and hanging the hook on the steel wire rope into the semicircle ring on the safety belt.





# Anti falling device



|              |                 |               |              |
|--------------|-----------------|---------------|--------------|
| 1 Top hook   | 3 Housing       | 5 Steel strip | 7 Wire rope  |
| 2 Nylon rope | 4 Ratchet wheel | 6 Pawl        | 8 Lower hook |

| Model      | Active radius | Speed | Rated load | Braking distance | Failure strength | Mechanical life |
|------------|---------------|-------|------------|------------------|------------------|-----------------|
|            | (m)           | (m/s) | (kg)       | (m)              | (N)              | (frequency)     |
| DW- TXS-3  | 3             | >1    | 150        | <0.2             | >9000            | >2x10000        |
| DW- TXS-5  | 5             | >1    | 150        | <0.2             | >9000            | >2x10000        |
| DW- TXS-7  | 7             | >1    | 150        | <0.2             | >9000            | >2x10000        |
| DW-TXS-10  | 10            | >1    | 150        | <0.2             | >9000            | >2x10000        |
| DW-TXS-15  | 15            | >1    | 150        | <0.2             | >9000            | >2x10000        |
| DW-TXS-20  | 20            | >1    | 150        | <0.2             | >9000            | >2x10000        |
| DW-TXS-30  | 30            | >1    | 150        | <0.2             | >9000            | >2x10000        |
| DW- TXS-40 | 40            | >1    | 150        | <0.2             | >9000            | >2x10000        |
| DW- TXS-45 | 45            | >1    | 150        | <0.2             | >9000            | >2x10000        |
| DW-TXS-50  | 50            | >1    | 150        | <0.2             | >9000            | >2x10000        |



# Spring balancers

## Usage scenarios

In view of the situation where the working position is not fixed, it is irreplaceable for someone to move the heavy objects at will within a certain range. In some special occasions, such as limited space size and harsh handling requirements, the balancer has more obvious advantages.

It is widely used in explosion-proof, high temperature, chemical, computer, display, mechanical assembly and heavy moving and packaging in food and beverage.



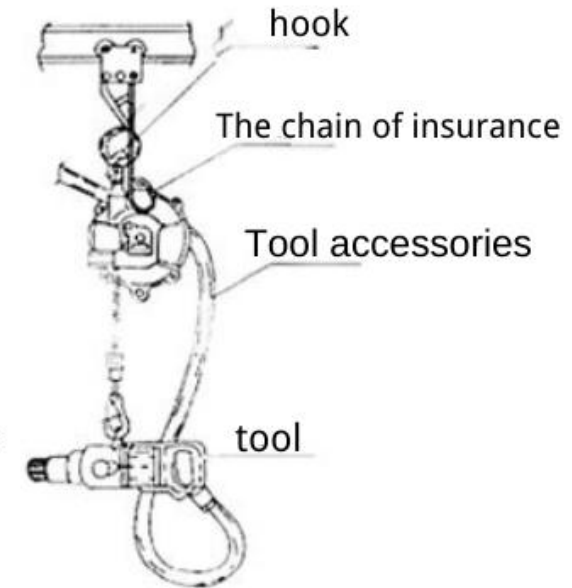
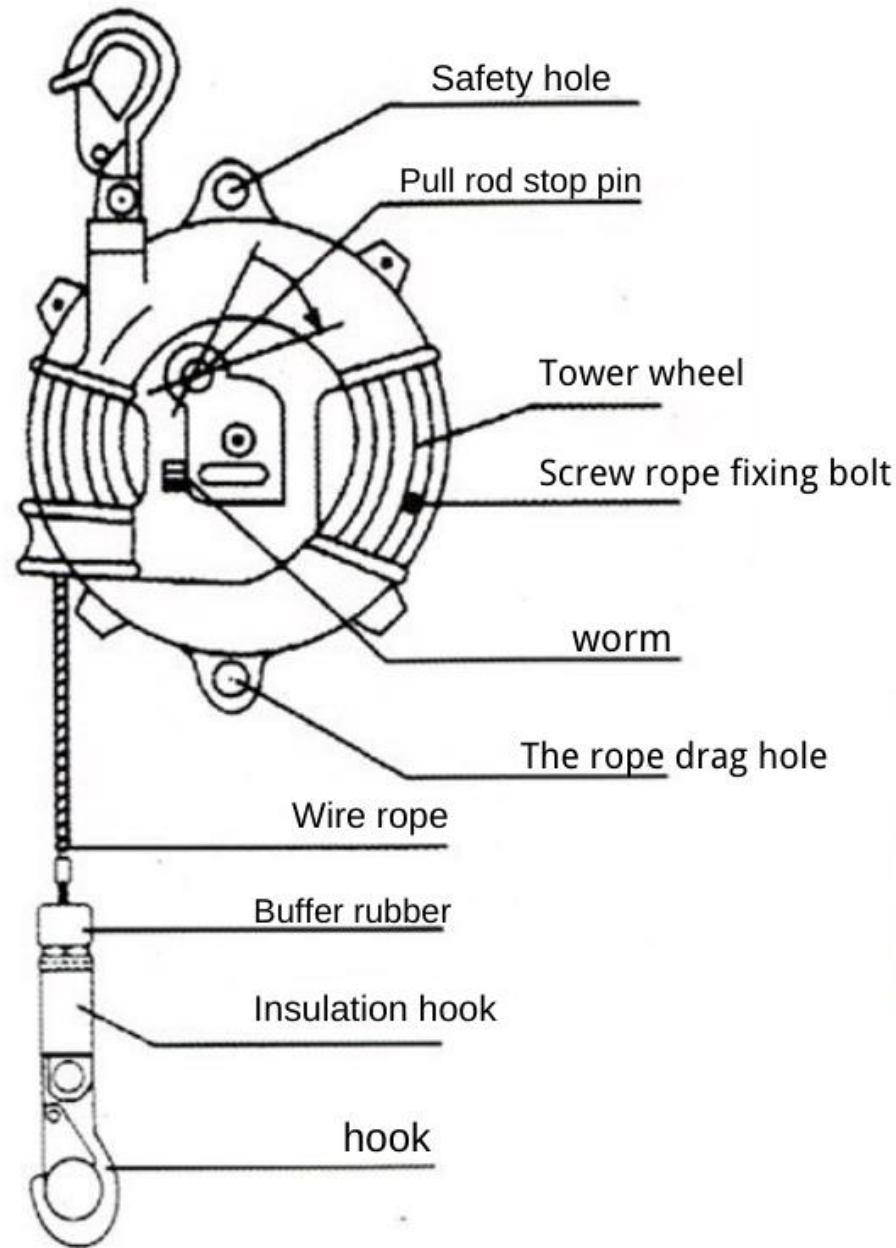
# >>> Spring balancers

## The product selection

Be sure to choose the right type to carry the total weight of the tool or equipment; When choosing a balancer, be sure to consider the weight of the tools and accessories.

Such as:

1. The weight of the tool (assumed to be 14 kg) plus the weight of the accessories (3 kg) is equal to 17 kg (total weight). A model EW-22(15-22 kg) can be selected for this application.
2. If the total weight is located at the edge of a model, please choose a larger model, which can also ensure a longer working life. Total weight (19kg) plus accessories weight (3kg) equals 22kg. The model EW-30(22-30 kg) should be chosen.



>> Spring balancers

Product parameter table

| Model  | Balance load(kg) | Individual weight(kg) | weight of one piece(kg) | Quantity of one carton | Small package size(cm) | Large package size(cm) | Wire rope length | Wire rope girth |
|--------|------------------|-----------------------|-------------------------|------------------------|------------------------|------------------------|------------------|-----------------|
| EW-3   | 1-3              | 1.72                  | 10.5                    | 6                      | 32*17*8                | 36*24*28               | 1.5m             | 3mm             |
| EW-5   | 3-5              | 1.8                   | 11                      |                        | 21.5*17*18             |                        |                  |                 |
| EW-9   | 5-9              | 4.1                   | 17                      | 4                      | 25*24*15               | 50*26*31               |                  | 4mm             |
| EW-15  | 9-15             | 4.4                   | 18                      |                        |                        |                        |                  |                 |
| EW-22  | 15-22            | 8.1                   | 8.1                     | 1                      | 38.5*31*23.5           |                        |                  | 5mm             |
| EW-30  | 22-30            | 8.5                   | 8.5                     |                        |                        |                        |                  |                 |
| EW-40  | 30-40            | 10.9                  | 11                      |                        |                        |                        |                  |                 |
| EW-50  | 40-50            | 11.3                  | 11.3                    |                        |                        |                        |                  |                 |
| EW-60  | 50-60            | 11.5                  | 11.5                    |                        |                        |                        |                  |                 |
| EW-70  | 60-70            | 11.8                  | 12                      |                        |                        |                        |                  |                 |
| EW-80  | 70-80            | 12.3                  | 12.5                    |                        |                        |                        |                  |                 |
| EW-100 | 80-100           | 19.9                  | 20                      |                        |                        |                        |                  |                 |
| EW-120 | 100-120          | 20.3                  | 20.5                    |                        |                        |                        |                  |                 |
| EW-140 | 120-140          | 20.8                  | 21                      |                        |                        |                        |                  |                 |
| EW-160 | 140-160          | 21.3                  | 21.5                    |                        |                        |                        |                  |                 |
| EW-180 | 160-180          | 21.8                  | 22                      |                        |                        |                        |                  |                 |
| EW-200 | 180-200          | 22.4                  | 22.5                    |                        |                        |                        |                  |                 |



### OEM/ODM

We are the direct factory will supply you with high quality products quote the most competitive prices



# CONTACT US



WELCOME TO CONSULT



+86 15354421336



hbdwa@ssroa.com



+86 15354421336



Allen Zhu

